

IGBT INVERTER PLASMA CUTTER WITH MIG/MAG/HF TIG /MMA FUNCTION

**PERFECT
POWER**



**Plasma
cutter**



MMA



MIG/MAG



**Flux cored
(gasless) wire
compatible**



HF TIG



5 in 1 Combo Cutting Machine
CTMG-4200



2T/4T

**Intelligent
control**

**Thermal
overload
protection**



Synergic

Arc force

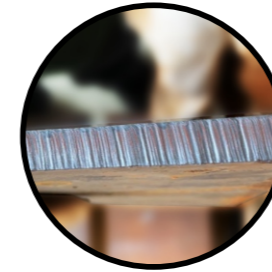
**Max
cutting**

Features

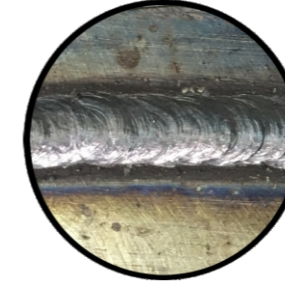
- ★ Multi-process welder for MMA、HF-TIG、 MIG/MAG, Gasless flux cored wire welding and CUT.
- ★ With HF TIG arc starting, allows to strike the arc easily with high frequency and make it easy to establish an arc under a variety of conditions.
- ★ SPL MIG and SYN MIG can meet the needs of different users and more simple to operate.
- ★ 2T/4T function, adjustable Pre-Flow and Post-Flow.
- ★ Max 15mm Cutting thickness.
- ★ Adjustable Arc Force, Anti-Stick and Hot Start.
- ★ VRD function, guarantees operation safety.
- ★ Over current & heating protection.

Multiprocess

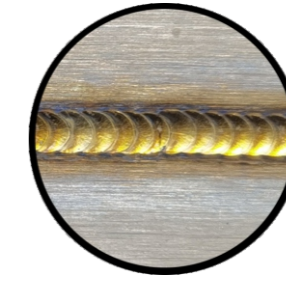
Stainless steel, carbon steel, low alloy steel, copper, and other metal sheet materials.



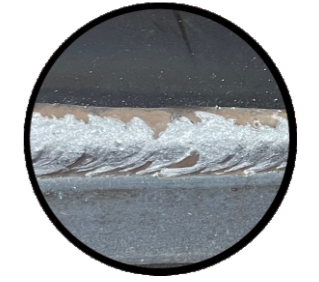
Max Cutting 15mm



Perfect MMA Welding

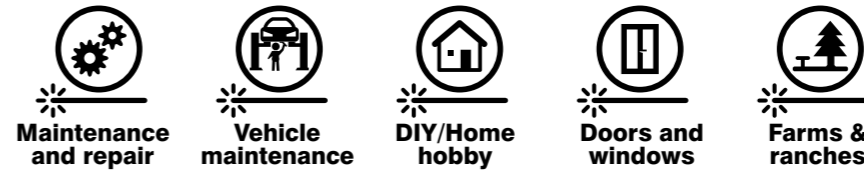


HF TIG Welding



Carbon steel

Applications



Technical Data

Model	CTMG-4200
Power input AC(V)	1pH 220V ±15%
Power input frequency(Hz)	50/60
Max. load power capacity(kVA)	8.0
Rated current input(A)	36
Welding current range(A)	20-200(TIG/MMA) 60-200(MIG) 20-40 (CUT)
Open circuit voltage DC(V)	66(TIG/MMA/MIG) 244(CUT)
Wire feeding speed(M/min)	2-5
Welding wire diameter(mm)	0.6-1.0
Max.cutting thickness(mm)	15
Applicable electrode diameter(mm)	1.6-5.0
Rated duty cycle(%)	40%
Insulation grade	F
IP grade	IP21
Dimensions(mm)	496*212*380
N.W.(kg)	15